
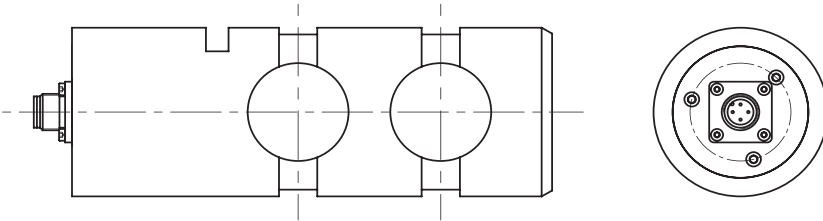


F5802

 尺寸及量程 / Size and Capacity


注：可根据客户需求定制产品。
Note: Dimensions acc customer requirement.


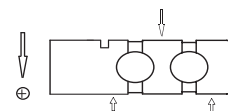

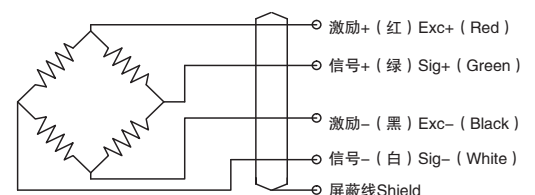
量程 /Capacity (kg)	材料 /Material
200~1,000,000	不锈钢 /Stainless steel

 技术参数 / Technical Parameters

参数	Specifications	技术指标/Technique
输出信号	Rated output	4...20mA/0...10V
非线性	Non-linearity	±0.5%...1%F.S.
滞后	Hysteresis	±0.5%...1%F.S.
重复性	Repeatability	±0.5%...1%F.S.
灵敏度温度漂移	Temp. effect on output	±0.2%F.S. / 10°C
零点温度漂移	Temp. effect on zero	±0.2%F.S. / 10°C
输入电阻	Input impedance	2,000±100Ω
输出电阻	Output impedance	2,000±50Ω
绝缘电阻	Insulation	≥5000MΩ
激励电压	Recommended excitation	18...30VDC
最大激励电压	Maximum excitation	30V
负载阻抗	Burden impedance	(UB-7.5V)/0.024A
温度补偿范围	Compensated temp. range	-10 ... 40°C
工作温度范围	Operation temp. range	-20 ... 80°C
安全超载	Safe overload	150% F.S.
极限超载	Ultimate overload	300% F.S.
电缆线尺寸	Cable size	M12×1-4P
防护等级	Protection class	IP67
负载	Burden	for current output 电流输出 < (UB-7.5 V)/0.024 A for voltage output 电压输出 > 10 kΩ
连接方式	Cable color code	(可定制)


 特点和用途 / Features&Applications

- 不锈钢材料，长期稳定性好
- 安装在塔机、吊车装载轴销部分，可取代现有的转轴，防止超载
- 适用于港口、码头货物计量及启闭机、起吊设备的安全检测
- 尺寸及形状可定制，IP67
- Made of stainless steel, long term stability
- Used in overload tower cranes and hoisting cranes for prevention
- Can be used as replacement for existing shafts
- Used for port, terminal and cargo cranes as well as hoist, lifting equipment and safety testing applications
- Shape and size customized, IP67 protection

 受力方式 / Load Direction

 接线图 / Schematic Wiring Diagram


注：屏蔽线不与弹性体相连。

Note: Cable shield is not connected to the element.